

MUNSON TP. NORTH-WEST QUARTER BURTON TP. NORTH-WEST QUARTER

- Lot #1 #51 R.M. Slimson 0.91 A. 234-60
- " #2 #52 R. Millhof 1.95 A. 251-217
- " #25 #53 R.E.J. Blair 0.46 A. 246-205
- " #1 #54 R. Marinelli 2.25 A. 251-545
- " #1 #55 B. Brown 247-695
- " #32 #56 B.E.S. Lerby 1 A. 257-14
- " #1 #57 D.E. Pfouts 1 A. 257-464
- " #3 #58 I. Lomsky 254-557
- " #1 #59 W.W. Fisher 260-75
- " #3 #60 C.A. Hubbard 242-256

See Burton Tp. Detail 3-R  
 City of Akron  
 217-255 C.H. Davis et al  
 19.18 A.

See Burton Tp. Detail 3-R  
 City of Akron  
 217-255 C.H. Davis et al  
 19.18 A.

See Burton Tp. Detail 3-R  
 City of Akron  
 217-255 C.H. Davis et al  
 19.18 A.



3.75  
 6.0  
 235.00  
 247.75

Campbell  
 Johnson  
 Blair  
 et al  
 2-24-60  
 10/23/53  
 Bank Bkmt.

SCALE 1 in. = 10 ch.

MAR. 1, 1954

- KRAUSE & SCHWARZ TO
- 1 231-572 L.G. Slupe 2 A.
  - 2 232-81 C.L.E.M. Nahrung 1 A.
  - 3 247-173 L. & A. Scheuring 1 A.
  - 4 237-280 R.E.J. Lovell 4.725 A.
  - 5 243-156 W.C. Hensel 1 A.
  - 6 243-457 Ch. Sc. Soc. of Burton 0.9 A.
  - 7 257-323 W.C. Hensel 1 A.
  - 8 257-344 " 1 A.
  - 9 178-304 W. Warner 1.85 A.
  - 10 260-68 J.H. Miller 0.75 A.

9.305 Ac. + 4.4 Ac.  
 City of Akron  
 2-24-60  
 10/23/53  
 Bank Bkmt.

3 N.W.



SOUTH-WEST QUARTER

BURTON TP.

SOUTH-WEST QUARTER

- 55, 56 M.G. Bailey 254-228
- 105 D. & S. Bucko 254-282
- 88, 89 W. Bailey 260-55
- 156 W.E. Thomas 257-618
- 93 V.G. Woodard 254-315
- 58 E. Patterson 257-16
- 57 D.J. Marsteller 257-17
- 160, 161 A.A. Board 257-536, 537
- 107 M.G. Ward 257-551
- 254 W. Vorhees 257-467
- 250 D.L. Ward 257-466
- 99 D.G. Ashburn 257-439
- 100 R. Garss 257-438
- 108 T.L. Evans 257-434
- 251 W.E. Buckszar 257-433
- 234 J.M. Johnson 257-432
- 135 Uno Club Inc. 257-287
- 146 H.L. Bucher 257-286
- 145 W.E. Fricker 257-285
- 144 S.E. Chitwood 257-284
- 253 A. Brom 257-283
- 103 M.E.P. Harper 257-282
- 109 J.M. Waugh 257-281
- 96, 97 F.C. Gallagher 257-281

217-822 Josephine Poulis et al 255-351

- #171 L.F. R. Kovach 257-257
- #187, 188 A. Valerio 257-167
- #16, #15 J.E. Wheeler 257-55
- #14, #15 J.R. Gayle 257-585
- 183, #182 A.C. Owen 257-7
- 151, #150 F.M. Mosley 255-186
- 123, #150 B.W. Spencer 255-117
- 141, #140 A.J. Saxton 254-533
- 139 A, #140 T.F. Kelley 254-523
- 137, #136 G.L. Gayle 254-488
- 106 A.L. Hunter 254-277
- 152 V.L. Wimberly 254-257
- 153 A.E. Porter 254-241
- #135, #136 K.E. Crockett 254-186
- #158 J.B. Bodnar 254-173
- #174, #175 D.V. Dale 255-58, 79
- #172, #173 J.E. Sengbusch 255-59
- #87 J.E. Kalliszewski 254-235

234-347 B.G. Larson 254-143

- #52 N.E. Carmigiano 254-143
- #44 J.E. McDaniel 254-49
- #81 L.P. Workman 254-48
- #138, 139 W.S. Kocour 254-25
- #157 D.P. Porter 254-3
- #84 T.E. Wright 254-4
- #27 W.E. Jurek 251-501
- #153 A.A. Board 251-498
- #154 M.A. Burkholder 257-380
- #101 C. Burkhardt 254-280
- #74, 75, 76 J.E. Nemecek 251-341
- #86 H. Lapp 251-578
- #102 C.A. Boule 251-549
- #78, 79 C.E. Nyland 254-499, 500
- #85 L. Stevens 260-37
- #32 J.B. Alhomondo 251-423
- #8470 A. Carri et al 256-75
- #68 B. Burian 246-74
- #62, #65 E.F.E. Hoffman 251-489
- #66, #67 P. Burian 243-604
- #52 & 1/2 part W.L. Baker 243-450
- #10 A.A. Wilber 243-602
- #43 C.M. Pretzer 243-606
- #431 W.E. Clear 245-178 #2, 254-330
- #3 E.H. Huer 245-179
- #45, #46 J.E. Wimsitt 245-443
- #49 C.L. Becker 245-444
- #20 J.E. Carmigiano 245-475
- #48 J.L. Becker 245-476
- #32, #33 J.E. Kupchick 245-477
- #23 C.W. Barber 255-86
- #19 S.A.S. Vanario 245-481
- #24, #23 E.N. Meck 245-517
- #22 C. Barber 245-479
- #7 A. Rehberg 245-518
- #17, #18 E.40. Herst 245-564
- #8, #9 A.A. Wilber 246-193
- #6 C.A.D. Kling 251-161
- #50, #51 M.G. Tomblin 246-217
- #47 J.E. Wimsitt 246-218
- #50, 151, 152 J.R. Musil 254-32
- #21 W. Carmigiano 246-333
- #35 L.H. Jurek 246-354
- #53 H. Francis 246-355
- #30 G.C. Shevchik 246-385
- #26 L.E. Lewis 246-407
- #59 H.M. Ausprung 257-174
- #24 E.H. Flint 254-8
- #30 V.E.A. Moore 246-532
- #41 J. Barnes 246-561
- #40 M.H. McDowell 254-35
- #25 F.C. Ault 257-528
- #52 W.B. Brod Jr. 246-574
- #38, #37 R.J. Lambert 260-51
- #11 W.E. Richmond 246-508
- #77 G.S. Zeman 251-121
- #74, #75 F. Kustner 251-130
- #90 C.B. Rummel 251-133
- #80 B. Ziemski 251-178
- #58 D.E. Dunion 251-179
- #35 W.E. Keller 251-340
- #31 G.M. Teller 251-281

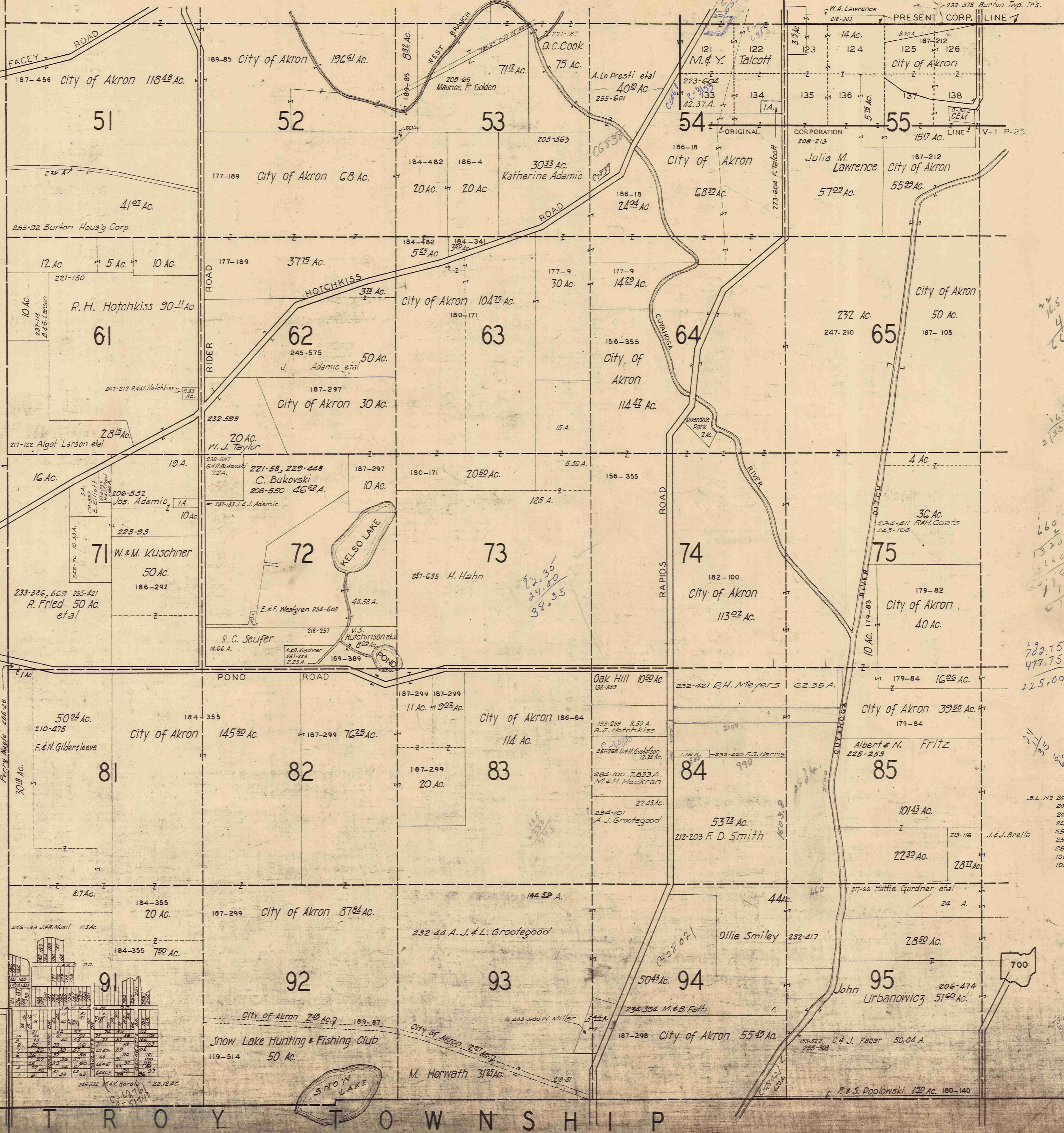
232-369 J. Musil subdn (not recorded) 208-216

- #23 C.W. Barber 255-86
- #19 S.A.S. Vanario 245-481
- #24, #23 E.N. Meck 245-517
- #22 C. Barber 245-479
- #7 A. Rehberg 245-518
- #17, #18 E.40. Herst 245-564
- #8, #9 A.A. Wilber 246-193
- #6 C.A.D. Kling 251-161
- #50, #51 M.G. Tomblin 246-217
- #47 J.E. Wimsitt 246-218
- #50, 151, 152 J.R. Musil 254-32
- #21 W. Carmigiano 246-333
- #35 L.H. Jurek 246-354
- #53 H. Francis 246-355
- #30 G.C. Shevchik 246-385
- #26 L.E. Lewis 246-407
- #59 H.M. Ausprung 257-174
- #24 E.H. Flint 254-8
- #30 V.E.A. Moore 246-532
- #41 J. Barnes 246-561
- #40 M.H. McDowell 254-35
- #25 F.C. Ault 257-528
- #52 W.B. Brod Jr. 246-574
- #38, #37 R.J. Lambert 260-51
- #11 W.E. Richmond 246-508
- #77 G.S. Zeman 251-121
- #74, #75 F. Kustner 251-130
- #90 C.B. Rummel 251-133
- #80 B. Ziemski 251-178
- #58 D.E. Dunion 251-179
- #35 W.E. Keller 251-340
- #31 G.M. Teller 251-281

254-302 #20

- #38, #37 R.J. Lambert 260-51
- #11 W.E. Richmond 246-508
- #77 G.S. Zeman 251-121
- #74, #75 F. Kustner 251-130
- #90 C.B. Rummel 251-133
- #80 B. Ziemski 251-178
- #58 D.E. Dunion 251-179
- #35 W.E. Keller 251-340
- #31 G.M. Teller 251-281

254-302 #20



43300 / 100 = 433  
 43300 / 100 = 433  
 13275  
 130680  
 14950

2100  
 4775  
 8100  
 75550  
 1003275

160  
 1320  
 660  
 1945  
 2535

660  
 1320  
 660  
 1945  
 2535

489.75  
 477.75  
 225.00

MAR. 1, 1954

S.L. No 245 Burton Hsing Corp. 257-603  
 246  
 247  
 248  
 249  
 250  
 251  
 252  
 253  
 254  
 255  
 256  
 106  
 102

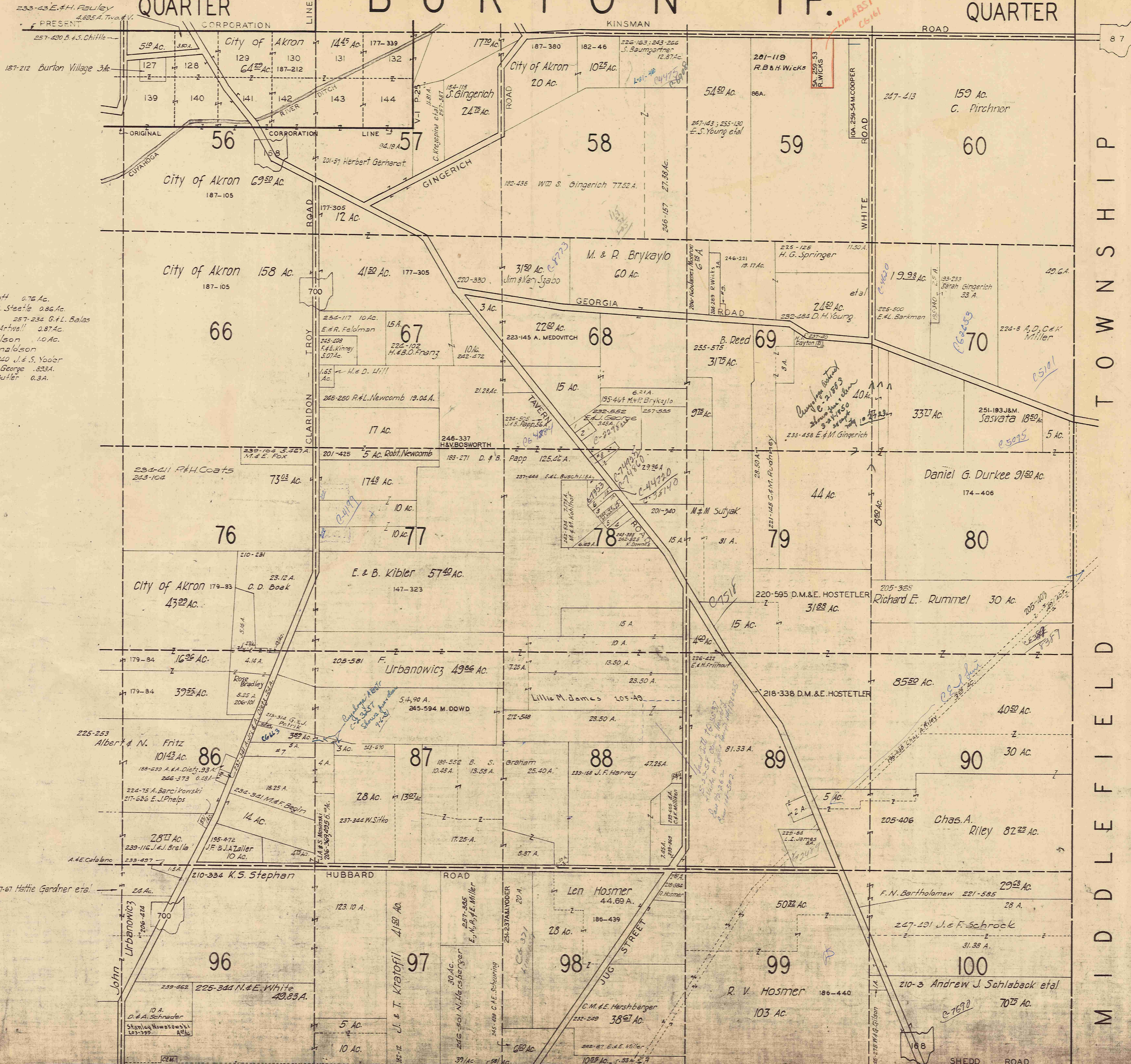
440  
 330  
 990

3 S.W.

SOUTH-EAST QUARTER

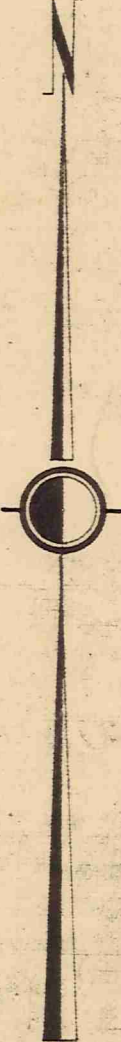
BURTON TP.

SOUTH-EAST QUARTER



- Lot 68 1. 246-130 A. Scott 0.76 Ac.
- 2. 225-263 R. & P. Steele 0.86 Ac.
- 78 3. 257-232 G. L. Balas
- 4. 245-579 M. & R. Artwell 0.87 Ac.
- 5. 251-213 R. Wilson 1.0 Ac.
- 6. 251-252 J. Donaldson
- 86 7. 247-203; 251-120 J. & S. Young
- 78 8. 252-344 A. J. George 0.83 Ac.
- 69 9. 257-631 L. C. Butler 0.3 Ac.

M I D D L E F I E L D T O W N S H I P



SCALE 1 in. = 10 CH.  
 MAR. 1, 1954

Handwritten calculations and notes:  
 43560 / 123579.60 = 352.9960  
 217980  
 1604  
 1490  
 144360  
 1604  
 2389960

3 SE.



